



P Permit holders only Mon - Fri 9.30 am - 4.30 pm

Viewit
REAL ESTATE

Dawlish Avenue, London

£961,000 Freehold

3 bedroom terraced house for sale

Description

Rare opportunity to own this family home on Dawlish Avenue, a quiet residential cul-de-sac in the heart of Earlsfield, with a short walk to Earlsfield Station, coffee shops and restaurants, Wimbledon Park and Wimbledon farmers market.

This house is in the catchment area for Wimbledon school.

Set on two floors, the space is well lay out, living space with kitchen, dining room and one bathroom on ground floor and two bedroom with another bathroom on the first floor.

The house benefits from a spacious garden to the rear, which can be accessed from both the house and the back private street shared with your few neighbours, which also gives access to your garage.

The current owner have already applied for planning permission for an extension, please ask for more info.

Council Tax Band: E

Tenure: Freehold

Garden details: Private Garden

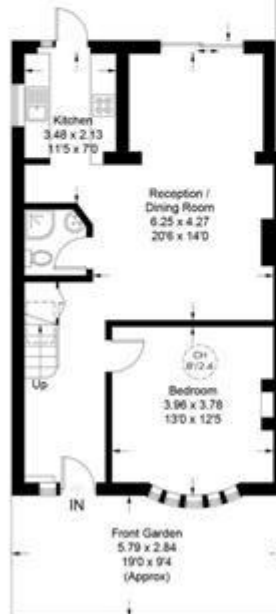
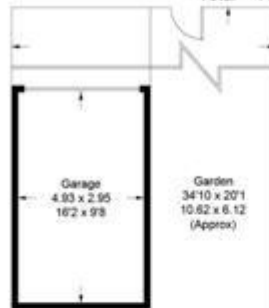
Tenure

Freehold



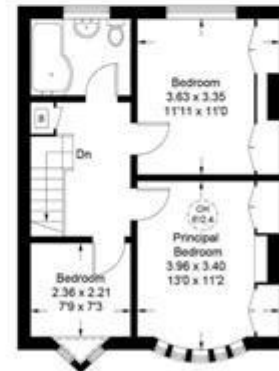
Dawlish Avenue

Approximate Gross Internal Area = 103.2 sq m / 1111 sq ft
Garage = 14.6 sq m / 157 sq ft
Total = 117.8 sq m / 1268 sq ft



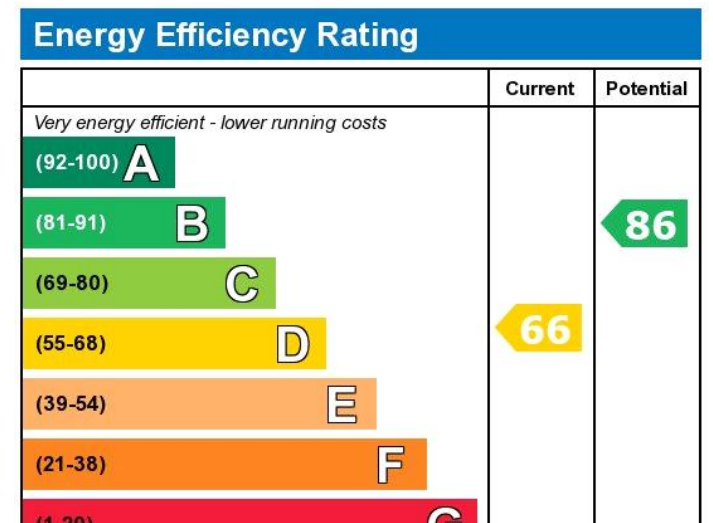
Ground Floor

Reduced headroom below 1.5m / 5'0"



First Floor

Illustration for identification purposes only, not for valuation purposes.
measurements are approximate, not to scale.



Viewing by appointment only
 Viewit Real Estate - London
 204 Sky Gardens, Nine Elms, London SW8 2GB
 Tel: 02080950933 Email: info@view-it.co.uk Website: <https://www.view-it.co.uk>

